

Choice Advice



The Choice Advice Service also offer information, advice and support to all parents on the school admissions and appeals procedures through the School Admissions and Appeals process.

Tel: 01823 356903

Email: choiceadvice@somerset.gov.uk

For more information visit our website:
www.somersetseنديas.org.uk

Disclaimer

The Somerset SENDIAS Service has made all reasonable efforts to ensure that the information contained in this leaflet is accurate and up to date at the time of publication. It does not constitute legal advice and Somerset SENDIAS service cannot accept any responsibility for any loss or damage suffered as a consequence of any reliance placed upon us.

How you can contact us



Tel: 01823 355578

Email: somersetSENDIAS@somerset.gov.uk

Website: www.somersetseنديas.org.uk

Working together for equalities

This leaflet is available in other formats and languages on request.



Portugese



Estes documentos também se encontram disponíveis em Braille, letras grandes, fita ou disco e podem ser traduzidos para Português.

Polish



Ten dokument jest także dostępny w wersji Braille'a, pisany dużym drukiem, na kasecie lub dysku kompaktowym i może być przetłumaczony na język polski.



Jointly funded by Somerset Council
NHS integrated care board
NHS foundation trust

June 2025 (Information correct at date of print)



Somerset SENDIAS

Special Educational Needs and Disability Information, Advice & Support

A free impartial service for children and young people with SEND (aged 0-25), and their parent carers

Free | Confidential | Impartial

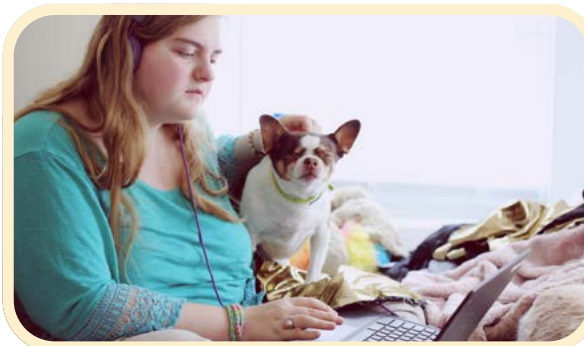
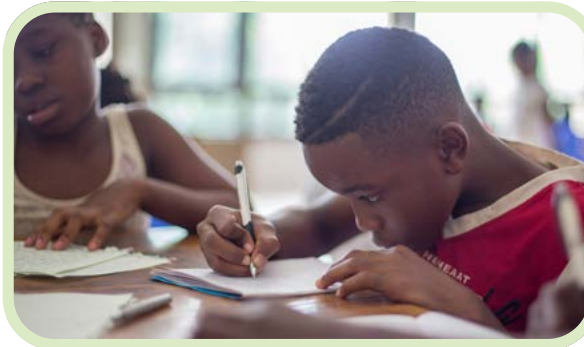
What we do



Somerset SENDIAS provides information, advice and support about special educational needs and disability (SEND) for parent carers, children and young people (up to the age of 25). The service is free, confidential and impartial. We encourage partnership working with schools, colleges, early years providers, the Local Authority and other statutory and voluntary services, so that parent carers children and young people can be part of decision making.

“Local Authorities **must** arrange for children with SEN or disabilities for whom they are responsible, and their parents, and young people with SEN or disabilities for whom they are responsible, to be provided with information and advice about matters relating to their SEN or disabilities.”

Source: Children and Families Act 2014, Chapter 2.



What we offer



- General SEND information, advice and support by email or telephone.
- SENDIAS is here to help you through the EHC Needs Assessment and advice on EHC Plans.
- Information, Advice and Individual support to help collate understand and interpret information; help to prepare for and/or support at meetings.
- Support in preparing for a SEND Tribunal.
- Support for young people on the transition process (16-25).
- Support families at SEN support in schools (Graduated response)
- Information on:
 - Educational law relating to EHC Plans;
 - SEND policy and practice;
 - Resolving disagreements, mediation and complaints procedures;
 - Somerset's 'Local Offer';
 - SEND Personal Budgets and Direct Payments.

